



Exploration & Production

Services & Accessories

SERVICES & ACCESSORIES

PDT has a wide range of auxiliary products and services that compliment our product line.

SERVICES

Flush and Fill Services:

PDT can efficiently perform flush and fill services on single control lines or flatpacks. Customers can choose from our standard processes or we can perform customer specified processes.

Filtration and particle analysis as per NAS or SAE Standards for water or oil based fluids.

Spooling Services:

PDT respools every TEC, TEF, Hybrid, Control Line, Flatpacks through a calibrated line center onto a wooden or metal reel.

Management of Customer Inventory:

PDT can store and manage inventory, including TEC, flatpacks, and Protectors and will provide updates as requested. With 24 hours we can prepare equipment for shipment. Metal reels are typically required for downhole cables and flatpacks. These reels often are returned with a short tail that was not required - we will dispose of these in accordance with EPA and any local regulations. These reels can then be used for future products.



Integration Testing:

PDT has a wide range of equipment to perform integrative testing on protector and associated lines. We will ensure that all line will fit into the relevant slots in the protector and fit onto the specified coupling. Relevant pull tests and drift tests can also be conducted.

Cable End Prep:

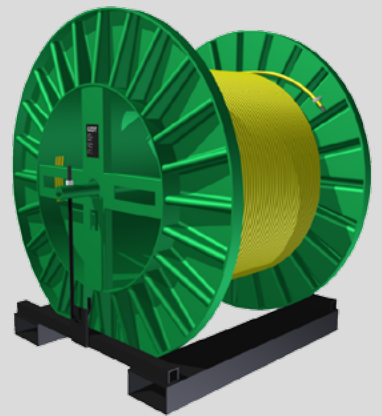
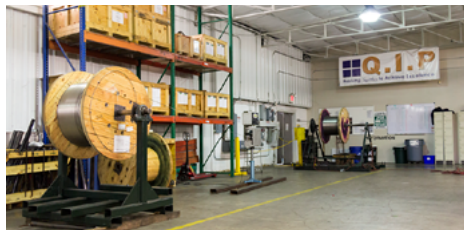
PDT can prep the ends of the TEC line to suit customer cable or control line terminations. In addition we can provide turn around subs or specialized sealing ends.

ACCESSORIES

Electrical Splices

Hydraulic Splices

Custom Reels & Skids





Exploration & Production

Services & Accessories

REELS FOR TEC AND CONTROL LINE

These large and sturdy reels take advantage of PDT's ability to build especially long lengths of Tubing Encapsulated Cable (TEC) and control line. If required, Junction boxes can be fitted and TEC terminated.

Please refer to the chart below for the size and capacity of the standard reels for TEC and bare control lines.

REEL SIZES AND CAPACITIES FOR TEC (3 1/4" ARBOR HOLE)

Reel Dimensions and Construction Flange Diameter x Traverse x Drum Diameter (inches)	Capacities 1/4" OD tubing (feet)	11mm Round encapsulated (feet)	11mm x 11mm square (feet)
54 x 32 x 32 metal	48,200	18,000	15,630
60 x 32 x 32 metal	67,000	24,900	21,600
66 x 32 x 36 metal	80,000	29,800	25,900
72 x 36 x 40 metal	106,000	39,600	34,400
72 x 48 x 40 metal	142,000	52,800	45,800
72 x 58 x 40 metal	171,100	63,800	55,400
80 x 42 x 36 metal	178,690	66,438	57,687
84 x 48 x 40 metal	219,097	81,641	70,731

REEL SIZES AND CAPACITIES FOR CONTROL LINE (2" ARBOR HOLE)

Reel Dimensions and Construction Flange Diameter x Traverse x Drum Diameter (inches)	Capacities 1/4" OD tubing(feet)	11mm Round encapsulated (feet)	11mm x 11mm square (feet)
36 x 24 x 24 wood	10,000	4,000	2,500
48 x 24 x 24 wood/metal	33,000	16,000	7,500
54 x 30 x 32 wood	40,000	18,000	10,000
54 x 32 x 32 metal	44,000	19,000	11,000
65 x 30 x 32 wood	70,000	25,000	19,000

Capacities include the required 2 inch clearance from the top of the reel. Add 5 inches to Flange Traverse to get the overall reel width. Customer specific reels can be supplied to ensure compatibility with pay off spooler units.